

A close-up photograph of a young woman with dark hair, smiling broadly to show her bright, white teeth. Her right hand is raised in a gesture of surprise or excitement. The background is white with a subtle pattern of thin, curved teal lines in the upper left corner. The overall tone is positive and professional.

Zax Implants

[www.zax-implants.com](http://www.zax-implants.com)





# ABOUT OUR COMPANY

**ZAX-IMPLANTS** were founded in 2001 as an association of mechanical engineers, dental technicians, experienced dentists and oral surgeons. The result of this combination of experience and knowledge are excellent dental products, particularly in the field of implantology.

**ZAX-IMPLANTS** manufactured on modern and special CNC-controlled machines.

The special shape of the implants, especially the conical offers easy implantation, maximum mechanical strength, stability immediately after implantation, and high bone integration,

The special treatment of the surface ((SLA: sand blasted, large grit, Acid- etched), the special packaging of the implants in glass vials without plastics, in a sterile environment, guaranteed **ZAX-IMPLANTS** of excellent quality and the highest success rate.

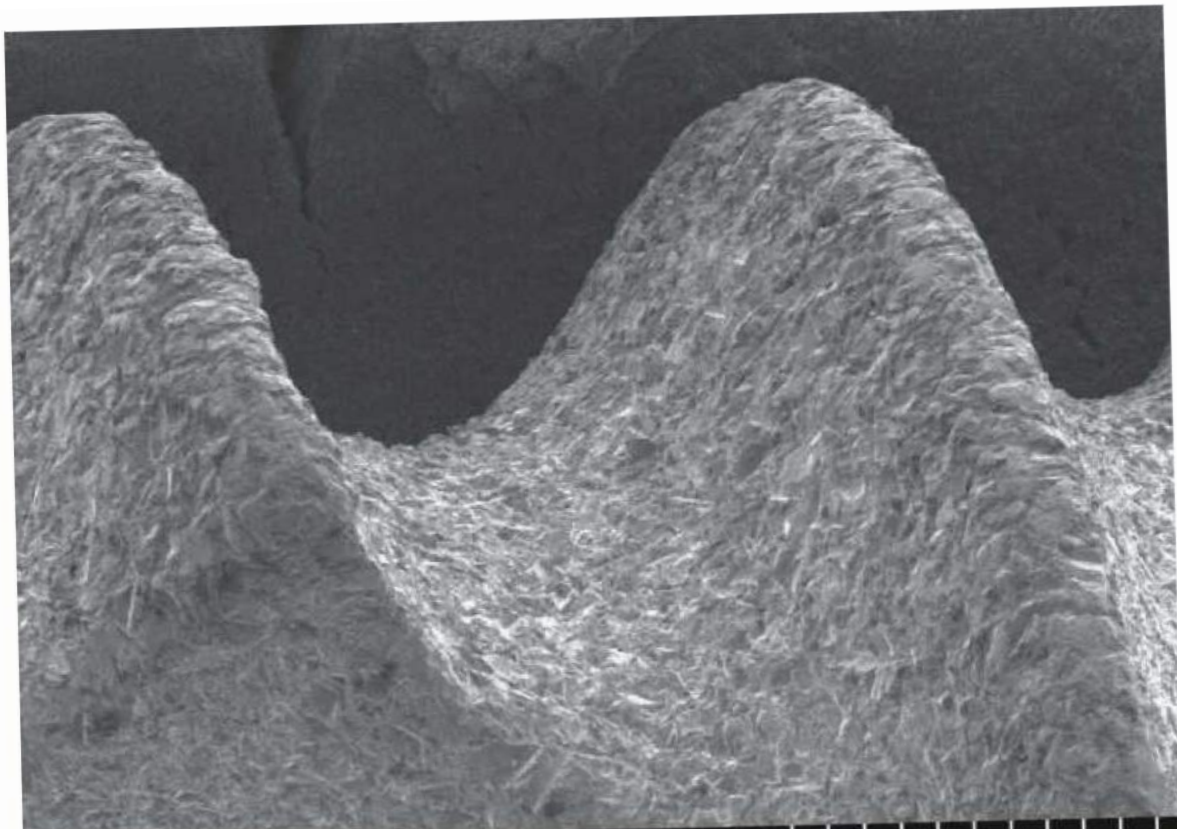
Our customers in Germany, Romania and Spain are highly satisfied over the years with these quality standards. These high quality characteristics have been proved by several scientific and clinical studies.

Implants material: Titanium alloy Ti-6Al-4V ELI, Grade 5.  
**ZAX-IMPLANTS** Dental Devices and abutments are made of titanium alloy Ti-6Al- 4V ELI.

Our company meets the international

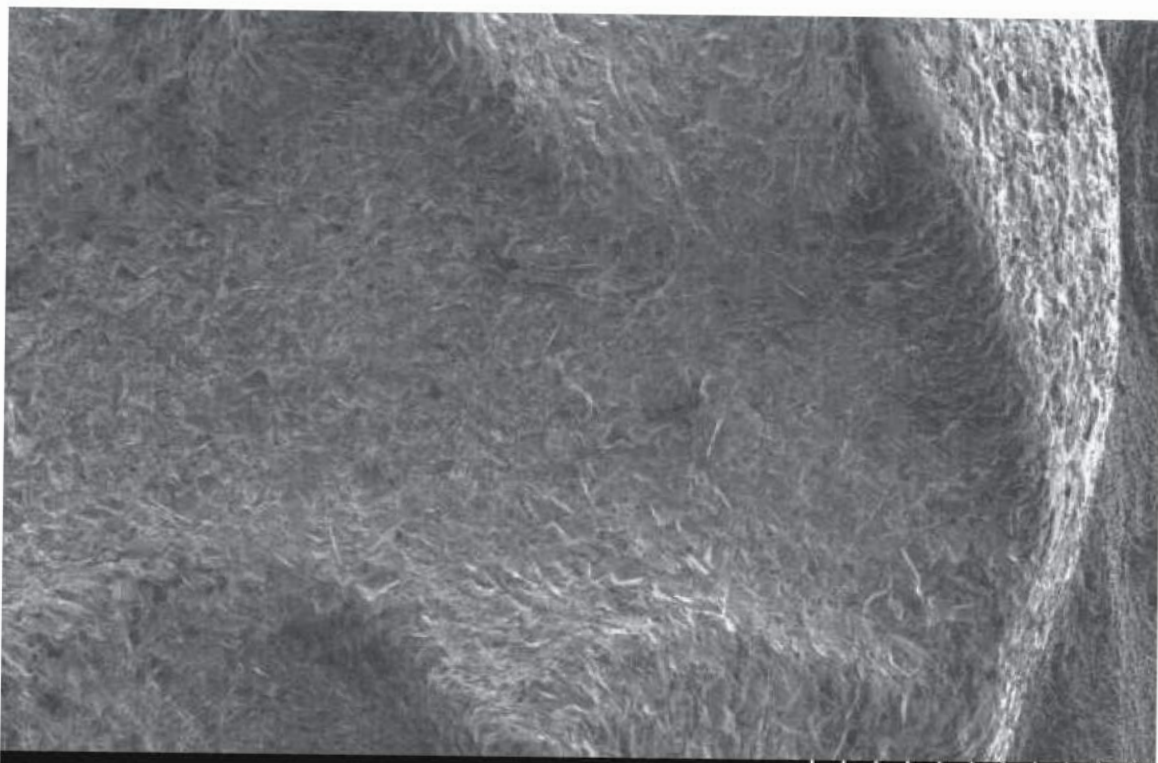
Standards and Certified by:





5.0kV 15.4mm x80 SE(L)

500um



5.0kV 15.4mm x70 SE(L)

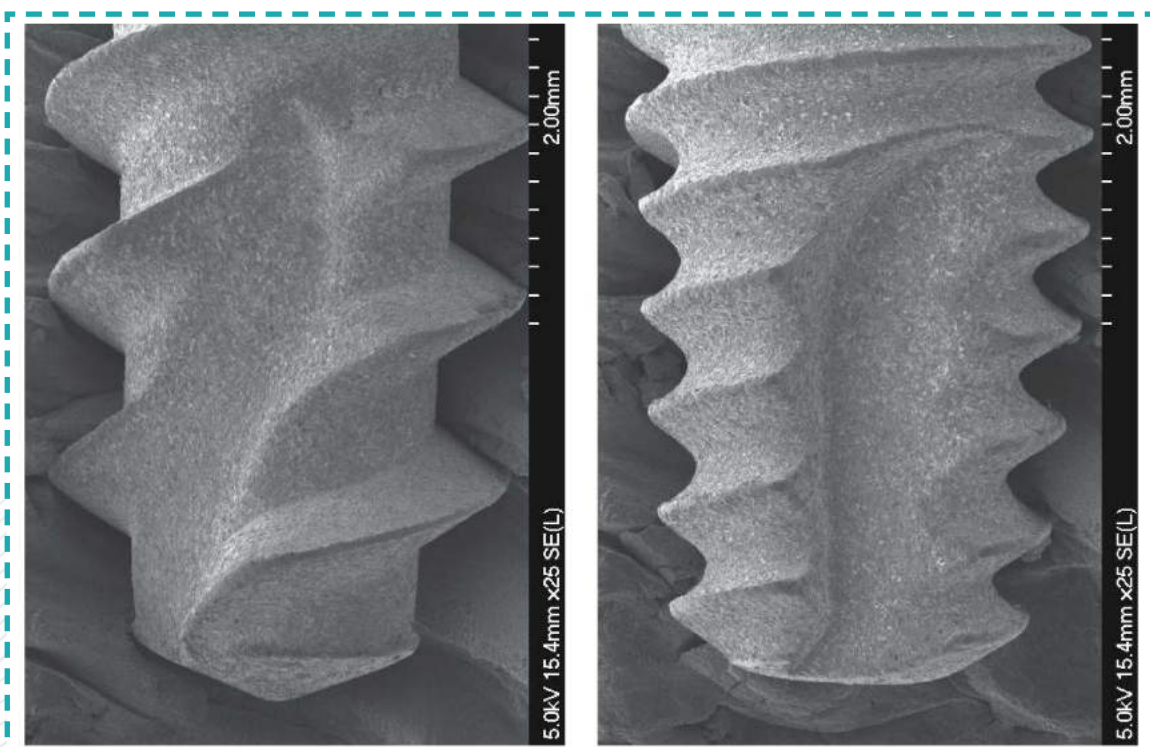
500um



# THE SPECIAL IMPLANT SYSTEM

## The SLA Implant Surface

The SLA surface is produced by a large grit sand-blasting process with corundum particles that leads to a macro roughness on the titanium surface. This is followed by a strong acid-etching bath with a mixture of HCl/H<sub>2</sub>SO<sub>4</sub> at elevated temperature for several minutes. This produces the fine 2–4 μm micro pits superimposed on the rough-blasted surface, as seen in the scanning electron microscope (SEM) picture of the SLA surface in figure 2. The surface is not microporous and therefore provides no enclosed volumes to reduce vulnerability to bacteria. The chemical composition of the SLA structure was found to be titanium oxide (TiO<sub>2</sub>) using X-ray photoelectron spectroscopy. This method analyses the first few atomic layers of the surface, and thus the chemical composition of the material which is in direct contact and interacts with tissue fluids and cells.



## Cat. Number of available implants:

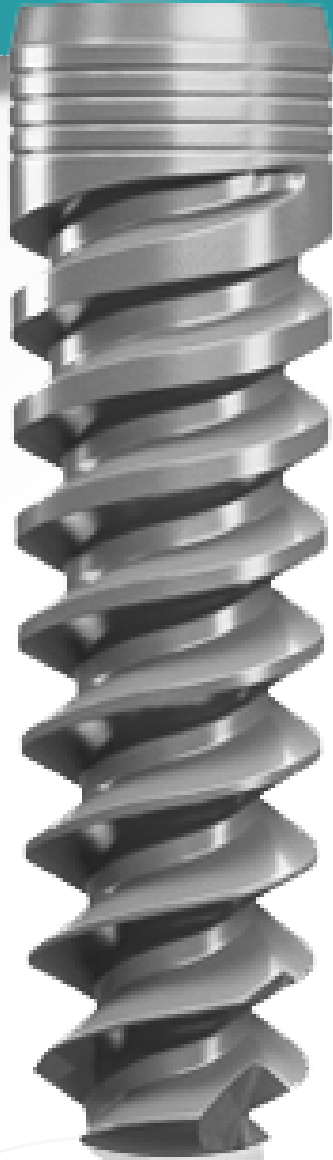
Length \ Dia.	Ø 3.3mm	Ø 3.75mm	Ø 4.2mm	Ø 5.0mm	Ø 6.0mm
6mm		SH 375 060	SH 420 060	SH 500 060	SH 600 060
8mm	SH 330 080	SH 375 080	SH 420 080	SH 500 080	SH 600 080
10mm	SH 330 100	SH 375 100	SH 420 100	SH 500 100	SH 600 100
11.5mm	SH 330 115	SH 375 115	SH 420 115	SH 500 115	SH 600 115
13mm	SH 330 130	SH 375 130	SH 420 130	SH 500 130	SH 600 130



■ Throughout entire implant's length ■ In cases of a hard bone drill through the cortical layer

■ Throughout entire implant's length ■ In cases of a hard bone drill through the cortical layer

# SHARK IMPLANTS



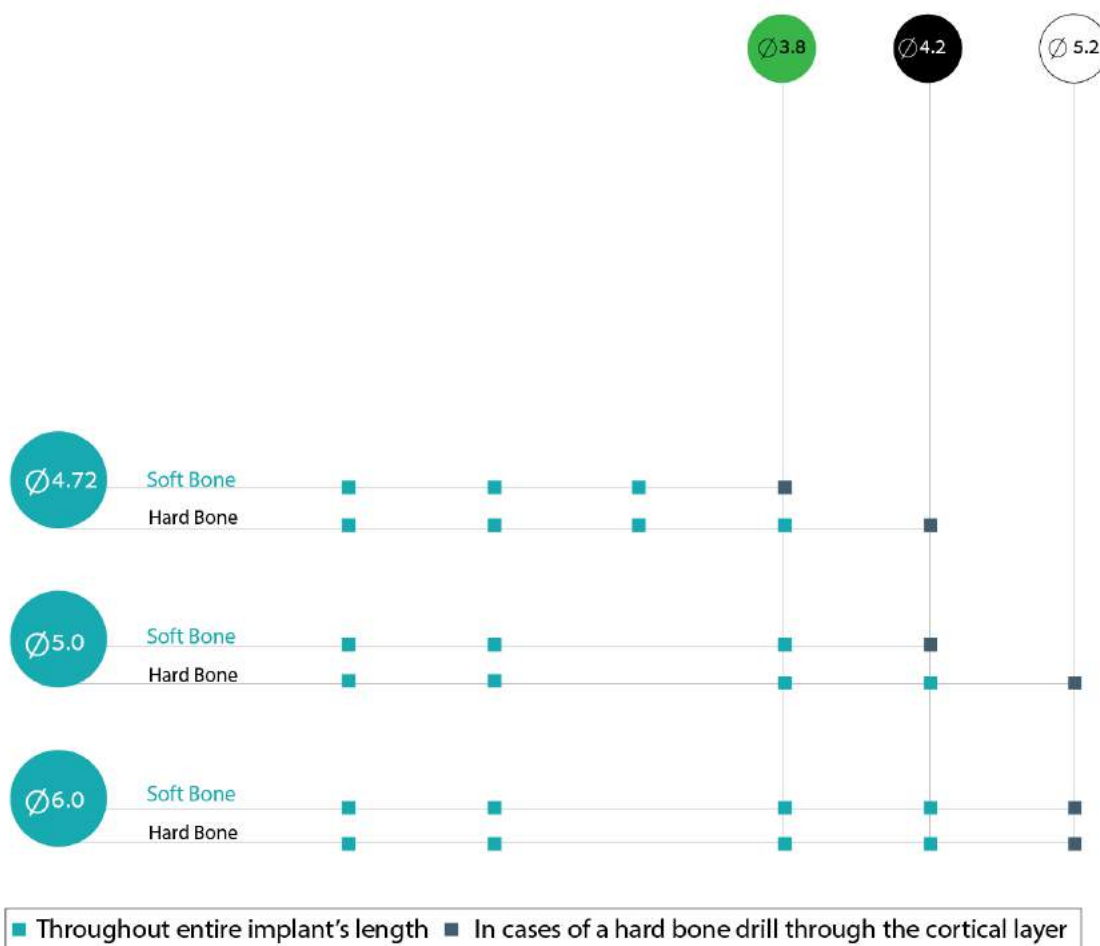
## SHARK IMPLANTS

.with deep thread design

It's designed for easy penetration, high  
.stability and immediate loading

## Cat. Number of available implants

Dia. \ Length	Ø 4.2mm	Ø 5.0mm	Ø 6.0mm
6mm	SA 420 060	SA 500 060	SA 600 060
8mm	SA 420 080	SA 500 080	SA 600 080
10mm	SA 420 100	SA 500 100	SA 600 100
11.5mm		SA 500 115	
13mm		SA 500 130	





# S A F E I M P L A N T S



## Safe Implants:

a special design with fine deep thread

And Stopper for safe use in small bone depth

Application: suitable for use in the mandible and maxilla

## Smart Implants:

Smart (One piece) implants designed for immediate loading where there is not enough bone in

Width drill should be easy 2mm drill and implant is designed for easy penetration.

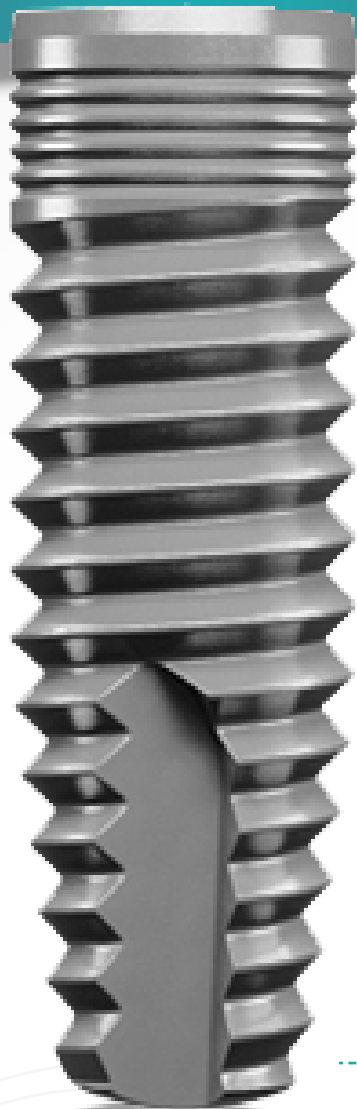
Cat. Number of available implants:

Length \ Dia.	Ø 3.3mm	Ø 3.75mm	Ø 4.2mm	Ø 5.0mm	Ø 6.0mm
6mm		CL 375 060	CL 420 060	CL 500 060	CL 600 060
8mm	CL 330 080	CL 375 080	CL 420 080	CL 500 080	CL 600 080
10mm	CL 330 100	CL 375 100	CL 420 100	CL 500 100	CL 600 100
11.5mm	CL 330 115	CL 375 115	CL 420 115	CL 500 115	CL 600 115
13mm	CL 330 130	CL 375 130	CL 420 130	CL 500 130	CL 600 130



■ Throughout entire implant's length ■ In cases of a hard bone drill through the cortical layer

# CYLINDER FINE IMPLANTS



CYLINDER FINE ←  
IMPLANTS

Application: suitable for use  
in the mandible

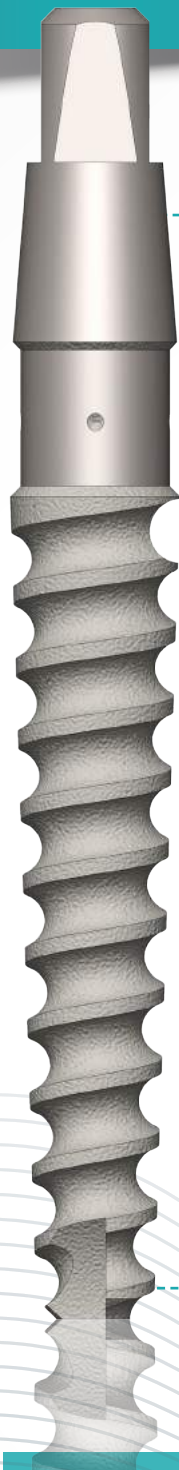


Cat. Number of available implants:

Length \ Dia.	Ø 2.50 mm	Ø 3.00mm
10mm	SM 250 100	SM 300 100
11.5mm	SM 250 115	SM 300 115
13mm	SM 250 130	SM 300 130



# SMART IMPLANTS



## Smart Implants:

Smart (One piece)  
implants designed for  
immediate loading where  
there is not enough bone in

Width drill should be easy  
2mm drill and implant  
is designed for easy  
penetration

# Instructions for use

## Symbols:



Expiry Date



For single use only



See instruction

**STERILE R**

**CE** 0473 CE marketing

Instructions for use **ZAX** dental implants:

Warning: ZAX-Implants are products to be used only by certified dentists.

## Product packaging:

Surgical planning and procedures:

All implants are cleaned and packaged in double vials in special clean environment, Sterility.

Guaranteed if pack unopened or undamaged, in case that the package was damaged or opened, do not sterile in any way!, in this case, implant should be returned to supplier for replacement, notice the expiration date on the pack before use, and implants should be used immediately after opening the vials.

## Surgical planning and procedures:

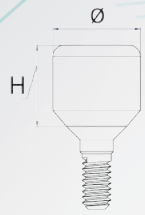
- 1 - To determine the adequate bone availability appropriate x-ray films should be used.
- 2 - Choose the appropriate implants to be placed.
- 3- Choose the Drill procedure according to Implant type (Shark, Cylinder, Tornado, and Safe)
- 4- Remove implant pack, and paste up the label with the data for each implant on the patient chart.
- 5- Open the outer vial.
- 6- Pull the implant by the insertion mount from the inner vial manually (s. figure), and place it immediately, rotate clockwise manually, then use a ratchet (1/4 inch)
- 7- Pull the insertion mount out of the implant.
- 8- Remove the cover screw on the top of the insertion mount (fig.-01), and insert it Clockwise on top of the implant .(Use hex driver 0.05 ).





# Healing Abutments

## SV Platform /RP Line



### Titanium Healing Abutment

HEX 1.72mm / 1-72 UNF  
3 & 5mm Shoulder

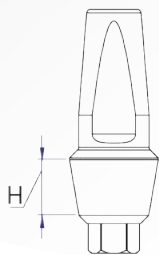
- Slim Body
- Standard
- Wide Body
- Extra Wide Body



REF	H	Ø
HA-ZI-RP-30N	3mm	3.8mm
HA-ZI-RP-50N	5mm	3.8mm
HA-ZI-RP-30	3mm	4.5mm
HA-ZI-RP-50	5mm	4.5mm
HA-ZI-RP-30W	3mm	5.5mm
HA-ZI-RP-50W	5mm	5.5mm
HA-ZI-RP-30EW	3mm	6.3mm
HA-ZI-RP-50EW	5mm	6.3mm

# PEEK Abutments

## SV Platform /RP Line



### PEEK Anatomic Straight Abutment

HEX 2.42mm / 1-72 UNF  
1 to 3mm Shoulder



#### REF

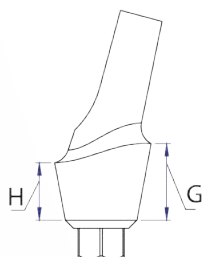
PA-ZI-RP10	H=1mm
PA-ZI-RP20	H=2mm
PA-ZI-RP30	H=3mm

To be used with:

REF RSD-L  
Ratchet Screw Driver  
[Long]



REF HSDA-L  
Hand Screw Driver  
[Long]



### PEEK Esthetic ELP Angulated Abutment

HEX 2.42mm 15° & 25° / 1-72 UNF  
1 to 3mm Shoulder



#### REF

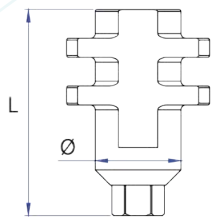
PA-ZI-RP1501	H=1mm	G=2mm
PA-ZI-RP1502	H=2mm	G=3mm
PA-ZI-RP1503	H=3mm	G=4mm
PA-ZI-RP2501	H=1mm	G=2mm
PA-ZI-RP2502	H=2mm	G=3mm
PA-ZI-RP2503	H=3mm	G=4mm



REF ATS-ZI-1.72  
Titanium Screw for Abutment  
[Included]

# Titanium Abutments

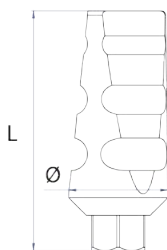
## SV Platform /RP Line



Open Tray Transfer Abutment  
HEX 2.42mm / 1-72 UNF



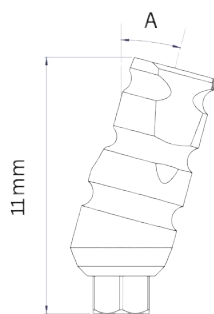
REF	L	Ø
OT-ZI-RP11	11mm	4.5mm
OT-ZI-RP14	14mm	4.5mm
OT-ZI-RP14N	14mm	4mm



Closed Tray Transfer Abutment  
HEX 2.42mm / 1-72 UNF



REF	L	Ø
CT-ZI-RP11	11mm	4.5mm
CT-ZI-RP14	14mm	4.5mm
CT-ZI-RP14N	14mm	4mm



Angutrans WK -  
Angulated Closed Tray Transfer Abutment  
HEX 2.42mm 15° & 25° / 1-72 UNF

\*Patent Pending US 62/416.368



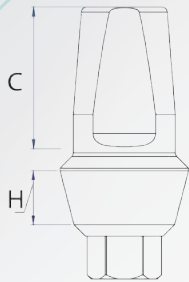
REF	Angle
ACTT-ZI-RP15	15°
ACTT-ZI-RP25	25°

REF ATS-ZI-172  
Titanium Screw for Abutment  
[Included]



# All In One System

## SV Platform /RP Line

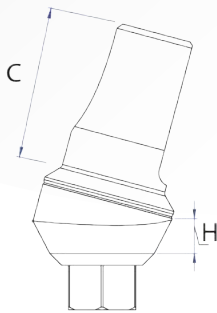


### Straight Titanium Transfer Abutment

HEX 2.42mm / 1-72 UNF  
1 to 3mm Shoulder



	REF	H	Cone Length C
S	TAP-ZI-RP1S	1mm	4mm
	TAP-ZI-RP2S	2mm	4mm
	TAP-ZI-RP3S	3mm	4mm
M	TAP-ZI-RP1M	1mm	6mm
	TAP-ZI-RP2M	2mm	6mm
	TAP-ZI-RP3M	3mm	6mm
L	TAP-ZI-RP1L	1mm	8mm
	TAP-ZI-RP2L	2mm	8mm
	TAP-ZI-RP3L	3mm	8mm

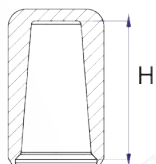


### Angulated Titanium Transfer Abutment

HEX 2.42mm 15°/25° / 1-72 UNF  
1 to 3mm Shoulder



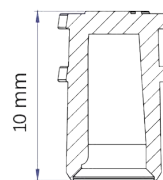
	REF	H	Cone Length C
15°	TAP-ZI-RP1510	1mm	6mm
	TAP-ZI-RP1520	2mm	6mm
	TAP-ZI-RP1530	3mm	6mm
25°	TAP-ZI-RP2510	1mm	8mm
	TAP-ZI-RP2520	2mm	8mm
	TAP-ZI-RP2530	3mm	8mm



Healing Cap PEEK  
for All In One System  
Temporary cap.  
For in S, M & L lengths.



REF	H
HCP-S	4mm
HCP-M	6mm
HCP-L	8mm



Plastic Transfer  
for All in One System  
Suitable For S, M & L lengths.



REF PT-TAP

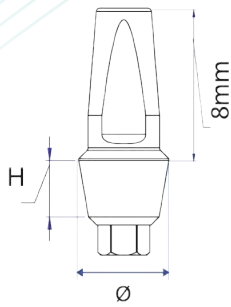


REF ATS-ZI-1.72  
Titanium Screw for Abutment  
(Included)



# Titanium Abutments

## SV Platform / RP Line

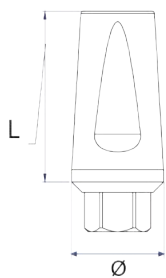


### Straight Titanium Abutment With Shoulder

HEX 2.42mm / 1-72 UNF  
1 to 4mm Shoulder [Ø 4.8mm]



<u>REF</u>	
TA-ZI-RP10	H=1mm
TA-ZI-RP20	H=2mm
TA-ZI-RP30	H=3mm
TA-ZI-RP40	H=4mm



### Slim\* Straight Titanium Abutment [\*Ø 3.8mm]

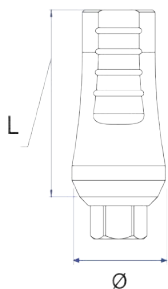
HEX 2.42mm / 1-72 UNF  
Length 5, 7 & 9mm



<u>REF</u>	
SSA-ZI-RP5	L=5mm
SSA-ZI-RP7	L=7mm
SSA-ZI-RP9	L=9mm



REF ATS-ZI-1.72  
Titanium Screw for Abutment  
[Included]



### Straight Titanium Abutment - Standard & Wide

HEX 2.42mm / 1-72 UNF  
Length 5, 7, 9, 12 & 15mm



Standard

Wide

Ø4.8

Ø5.5

<u>REF</u>	SA-ZI-RP5	L=5mm	SA-ZI-RP9W	L=9mm
	SA-ZI-RP7	L=7mm	SA-ZI-RP12W	L=12mm
	SA-ZI-RP9	L=9mm		
	SA-ZI-RP12	L=12mm		
	SA-ZI-RP15	L=15mm		



### Angulated Titanium Abutment - Standard

HEX 2.42mm 15° & 25° / 1-72 UNF

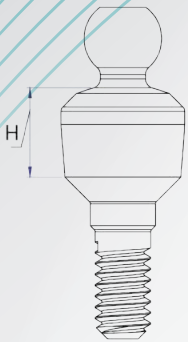
15°

25°

<u>REF</u>	TA-ZI-RP15	TA-ZI-RP25
	TA-ZI-RP15N [Slim]	TA-ZI-RP25N [Slim]
	TA-ZI-RP15L [Long]	TA-ZI-RP25L [Long]

# Ball Attachments

SV Platform / RP Line



## Titanium Ball Attachment

1 to 6mm Shoulder / 1-72UNF



REF

BAT-ZI-RP10

H=1mm



BAT-ZI-RP20

H=2mm



BAT-ZI-RP30

H=3mm



BAT-ZI-RP40

H=4mm



BAT-ZI-RP50

H=5mm



BAT-ZI-RP60

H=6mm

REF



MH-BAT

Metal Housing for Ball Attachment



RCB-B

Retentive Cap for Ball Attachment - Black (4 pcs.)  
For Lab use only



RCB-G

Retentive Cap for Ball Attachment - Green (4 pcs.)  
Extremely elastic, Retention less 500gr



RCB-Y

Retentive Cap for Ball Attachment - Yellow (4 pcs.)  
Very elastic, Retention 500-550gr.



RCB-P

Retentive Cap for Ball Attachment - Pink (4 pcs.)  
Elastic, Retention 800-950gr



RCB-T

Retentive Cap for Ball Attachment - Transparent (4 pcs.)  
Slightly elastic, Retention 1200-1300gr



OD-SP

Protective Disc for Ball Attachment & LOC-IN.

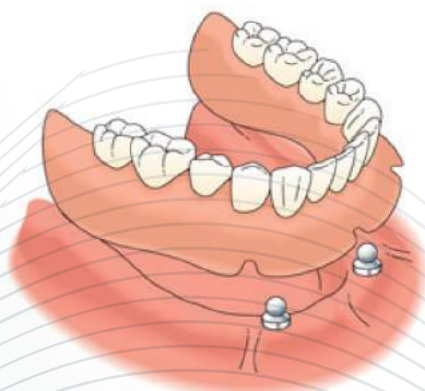
To be used with:



REF RSD-L  
Ratchet Screw Driver  
[Long]

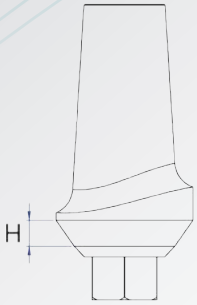


REF HSDA-L  
Hand Screw Driver  
[Long]



# Titanium Anatomic Abutments

## SV Platform /RP Line



### Anatomic Straight Titanium Abutment

HEX 2.42mm / 1-72 UNF

1 to 4mm Shoulder



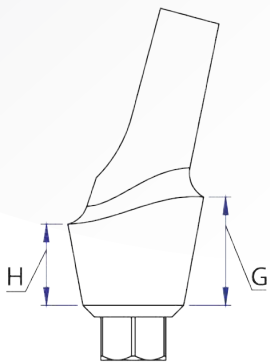
#### REF

TAA-ZI-RP10 H=1mm

TAA-ZI-RP20 H=2mm

TAA-ZI-RP30 H=3mm

TAA-ZI-RP40 H=4mm



### Anatomic ELP Angulated Titanium Abutment

HEX 2.42mm 15° & 25° / 1-72 UNF

1 to 4mm Shoulder



REF

TA-ZI-RP1510

H=1  
G=2



TA-ZI-RP1520

H=2  
G=3



TA-ZI-RP1530

H=3  
G=4



TA-ZI-RP1540

H=4  
G=5



TA-ZI-RP2510

H=1  
G=2



TA-ZI-RP2520

H=2  
G=3



TA-ZI-RP2530

H=3  
G=4



TA-ZI-RP2540

H=4  
G=5



REF ATS-ZI-1.72  
Titanium Screw for Abutment  
[Included]



To be used with:

REF RSD-L  
Ratchet Screw Driver  
[Long]

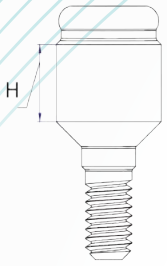


REF HSDA-L  
Hand Screw Driver  
[Long]



# LOC-IN WD

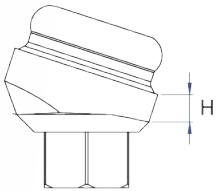
## SV Platform /RP Line



Loc-In WD [Wide]  
0.5 to 6mm Shoulder / 1-72UNF



REF    LOCW-ZI-RP05    LOCW-ZI-RP10    LOCW-ZI-RP20    LOCW-ZI-RP30    LOCW-ZI-RP40    LOCW-ZI-RP50    LOCW-ZI-RP60  
H=0.5    H=1    H=2    H=3    H=4    H=5    H=6



Loc-In WD Angulated 18 ° / 30 ° Degree  
1 to 4mm Shoulder / Hex 2.42mm / 1-72UNF










REF  
LOCW-ZI-RP1810 H=1mm    LOCW-ZI-RP3010 H=1mm  
LOCW-ZI-RP1820 H=2mm    LOCW-ZI-RP3020 H=2mm  
LOCW-ZI-RP1830 H=3mm    LOCW-ZI-RP3030 H=3mm  
LOCW-ZI-RP1840 H=4mm    LOCW-ZI-RP3040 H=4mm



REF SMUL-ZI-1.72  
Titanium Screw  
Delivered with One Piece  
Angled Overdenture Abutments

REF

-  MH-LOCW Metal Housing for LOC-IN WD
-  RCLW-V 4 Retentive Cap - Violet (strong 2.7kg) with Internal pin
-  RCLW-T 4 Retentive Cap - White (standard 1.8kg) with Internal pin
-  RCLW-P 4 Retentive Cap - Pink (soft 1.2kg) with Internal pin
-  RCLW-Y 4 Retentive Cap - Yellow (extra-soft 0.6kg)
-  RCLW-B 4 Retentive Cap - Black for laboratory use
-  ODW-SP Protective Disc for LOC-IN WD

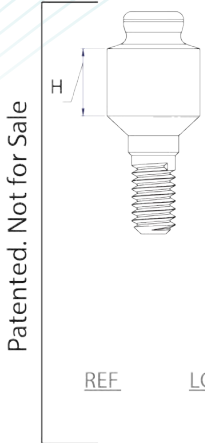


REF OD-TK  
Overdenture Tool Kit  
For Insertion and Extraction  
of Retentive Caps  
Suitable for all Overdenture lines



# LOC-IN

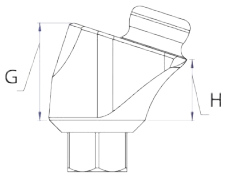
## SV Platform /RP Line



### Titanium Loc-In

0.5 to 6mm Shoulder / 1-72UNF [Ball with Hex 1.27mm & 0-80 UNF]

Patented. Not for Sale



### Loc-In 18° / 30° Degree

1 to 4mm Shoulder / Hex 2.42mm [Ball with 0-80 UNF]

18°

30°



REF LOCN--AN  
Analog for LOC-IN Abutment



REF SMUL-ZI-1.72  
Titanium Screw  
Delivered with One Piece  
Angled Overdenture Abutments



REF LOCN-PU  
Pick-up Impression Transfer  
for LOC-IN Line  
[Assembled with Yellow Retentive Cap]



REF LOCN-PT  
Impression Plastic Transfer  
[Individual Tray / Pick Up Impression]



# Multi-Units KS System All on 4/on 6

## SV Platform /RP Line



REF MUL-AAKS  
Analog Abutment for Multi Unit  
KS System.  
(Cone with M1.6X0.35)



REF MUL-KS-OT  
Open Transfer  
for All on 4 / on 6  
KS Multi Unit System.  
(REF MUL-KS-SOT  
Titanium screw included)



REF MUL-HCKS  
Healing Cap for  
Multi Unit KS System.  
(Assembled with  
REF MUL-TSKS  
Titanium screw)



REF MUL-TSLVKS  
Titanium Sleeve for  
Multi Unit KS  
System.  
(REF MUL-TSKS  
Titanium screw included)



REF MUL-PSLVKS  
Plastic Sleeve for  
Multi Unit KS System.  
(REF MUL-TSKS  
Titanium screw included)



REF MUL-KS-PUP  
Closed Plastic Transfer for  
Multi-Unit KS System.  
(Assembled with REF MUL-TSKS  
Titanium screw and  
REF MUL-KS-PCTT closed  
transfer base)



REF MUL-ADKS-R  
Rotational Adhesive Cap  
(REF MUL-TSKS  
Titanium screw included)

REF MUL-ADKS-AR  
Anti Rotational Adhesive Cap  
\*For Single Unit Restoration.  
(REF MUL-TSKS  
Titanium screw included)



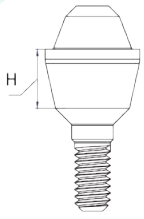
REF MUL-TSKS  
Titanium Screw for  
Multi Unit Cone  
M1.6X0.35 - KS System





# Multi-Units KS System All on 4/on 6

## SV Platform /RP Line



### Straight Multi Unit

1 to 5 mm Shoulder / 1-72UNF [Cone with M1.6X0.35]



REF MUL-ZI-KSRP10  
H=1mm



REF MUL-ZI-KSRP20  
H=2mm



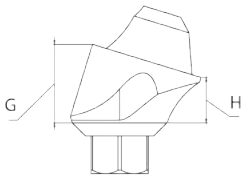
REF MUL-ZI-KSRP30  
H=3mm



REF MUL-ZI-KSRP40  
H=4mm



REF MUL-ZI-KSRP50  
H=5mm



### One Piece Angulated Multi Unit 17 °/30°

Hex 2.42mm / 1 & 2 mm Shoulder / 1-72UNF [Cone with M1.6X0.35]

17 °

30°



REF MUL-ZI-KSRP1710



REF MUL-ZI-KSRP1720



REF MUL-ZI-KSRP3010



REF MUL-ZI-KSRP3020

\*Anti Rotation

REF MUL-ZI-KSRP1710H

H=1mm  
G=2.4mm

REF MUL-ZI-KSRP1720H

H=2mm  
G=3.3mm

REF MUL-ZI-KSRP3010H

H=1mm  
G=3.3mm

REF MUL-ZI-KSRP3020H

H=2mm  
G=4.4mm



REF SMUL-ZI-1.72  
Titanium Screw  
Delivered with One Piece  
Angled Multi Unit



To be used with:

REF RSD-L  
Ratchet Screw Driver  
[Long]



REF HSDA-L  
Hand Screw Driver  
[Long]

# Zirconium Abutments

## SV Platform /RP Line



Zirconium Straight Abutment  
Titanium Base Hex 2.42mm / 1-72UNF  
1 to 3 mm Shoulder

REF

ZAA-ZI-RP10	1mm Shoulder
ZAA-ZI-RP20	2mm Shoulder
ZAA-ZI-RP30	3mm Shoulder

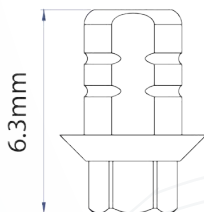


Zirconium Angulated Abutment  
Titanium Base Hex 2.42mm / 1-72UNF  
1 to 3 mm Shoulder / 15° & 25°

<u>REF</u>	15°	25°	Shoulder
ZA-ZI-RP1510		ZA-ZI-RP2510	1mm
ZA-ZI-RP1520		ZA-ZI-RP2520	2mm
ZA-ZI-RP1530		ZA-ZI-RP2530	3mm



REF ATS-ZI-1.72  
Titanium Screw for Abutment  
[Included]



Abutment Base  
Delivered With Castable Plastic Sleeve



<u>REF</u>	Material
ABZ-ZI-RPTI	Titanium
ABZ-ZI-RPCC	Cobalt Chrome

